

Product datasheet for **TA325208**

alpha Adducin (ADD1) Rabbit Polyclonal Antibody

Product data:

Product Type:	Primary Antibodies
Applications:	WB
Recommended Dilution:	WB: 1:500-1:2000; IHC: 1:50-1:200; IF/ICC: 1:100-1:500
Reactivity:	Human, Mouse, Rat
Modifications:	Phospho-specific
Host:	Rabbit
Isotype:	IgG
Clonality:	Polyclonal
Immunogen:	The antiserum was produced against A synthesized peptide derived from human ADD1 around the phosphorylation site of Serine 726
Formulation:	Rabbit IgG in phosphate buffered saline , pH 7.4, 150mM NaCl, 0.02% sodium azide and 50% glycerol.
Concentration:	lot specific
Purification:	The antibody was affinity-purified from rabbit antiserum by affinity-chromatography using epitope-specific peptide.
Conjugation:	Unconjugated
Storage:	Store at -20°C as received.
Stability:	Stable for 12 months from date of receipt.
Predicted Protein Size:	80 kDa
Gene Name:	adducin 1
Database Link:	NP_001110 Entrez Gene 11518 MouseEntrez Gene 24170 RatEntrez Gene 118 Human P35611
Background:	ADD2 a cytoskeletal protein that promotes the assembly of the spectrin-actin network. Adducin is a heterodimeric protein that consists of related subunits. Alpha- and beta-adducin include a protease-resistant N-terminal region and a protease-sensitive, hydrophilic C-terminal region.

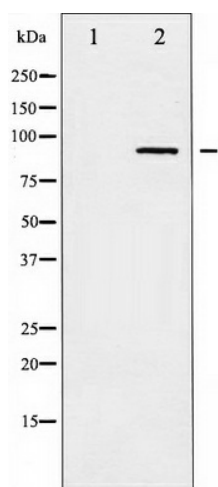


[View online »](#)

Synonyms: ADDA

Protein Families: Druggable Genome

Product images:



Western blot analysis of ADD1 phosphorylation expression in Forskolin treated HeLa whole cell lysates, The lane on the left is treated with the antigen-specific peptide.