

## Product datasheet for **TA325201S**

### **c Abl (ABL1) Rabbit Polyclonal Antibody**

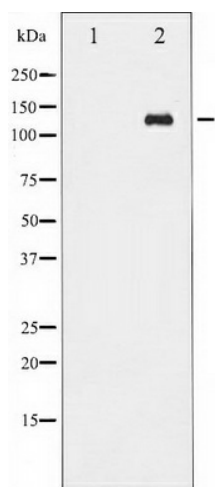
#### **Product data:**

<b>Product Type:</b>	Primary Antibodies
<b>Applications:</b>	WB
<b>Recommended Dilution:</b>	WB: 1:500-1:2000; IHC: 1:50-1:200
<b>Reactivity:</b>	Human, Mouse
<b>Modifications:</b>	Phospho-specific
<b>Host:</b>	Rabbit
<b>Isotype:</b>	IgG
<b>Clonality:</b>	Polyclonal
<b>Immunogen:</b>	The antiserum was produced against A synthesized peptide derived from human Abl around the phosphorylation site of Tyrosine 412
<b>Formulation:</b>	Rabbit IgG in phosphate buffered saline , pH 7.4, 150mM NaCl, 0.02% sodium azide and 50% glycerol.
<b>Concentration:</b>	lot specific
<b>Purification:</b>	The antibody was affinity-purified from rabbit antiserum by affinity-chromatography using epitope-specific peptide.
<b>Conjugation:</b>	Unconjugated
<b>Storage:</b>	Store at -20°C as received.
<b>Stability:</b>	Stable for 12 months from date of receipt.
<b>Predicted Protein Size:</b>	135 kDa
<b>Gene Name:</b>	ABL proto-oncogene 1, non-receptor tyrosine kinase
<b>Database Link:</b>	<a href="#">NP_005148</a> <a href="#">Entrez Gene 11350 Mouse</a> <a href="#">Entrez Gene 25 Human</a> <a href="#">P00519</a>
<b>Background:</b>	The ABL1 protooncogene encodes a cytoplasmic and nuclear protein tyrosine kinase that has been implicated in processes of cell differentiation, cell division, cell adhesion, and stress response. Activity of c-Abl protein is negatively regulated by its SH3 domain, and deletion of the SH3 domain turns ABL1 into an oncogene.



[View online »](#)

<b>Synonyms:</b>	ABL; abl; bcr; c-ABL; c-ABL1; JTK7; p150; v-abl
<b>Protein Families:</b>	Druggable Genome, Protein Kinase, Transcription Factors
<b>Protein Pathways:</b>	Axon guidance, Cell cycle, Chronic myeloid leukemia, ErbB signaling pathway, Neurotrophin signaling pathway, Pathogenic Escherichia coli infection, Pathways in cancer, Viral myocarditis

**Product images:**

Western blot analysis of Abl phosphorylation expression in Adriamycin treated COS7 whole cell lysates. The lane on the left is treated with the antigen-specific peptide.