

Product datasheet for **TA325201**

c Abl (ABL1) Rabbit Polyclonal Antibody

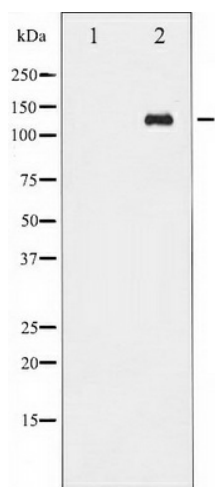
Product data:

Product Type:	Primary Antibodies
Applications:	WB
Recommended Dilution:	WB: 1:500-1:2000; IHC: 1:50-1:200
Reactivity:	Human, Mouse
Modifications:	Phospho-specific
Host:	Rabbit
Isotype:	IgG
Clonality:	Polyclonal
Immunogen:	The antiserum was produced against A synthesized peptide derived from human Abl around the phosphorylation site of Tyrosine 412
Formulation:	Rabbit IgG in phosphate buffered saline , pH 7.4, 150mM NaCl, 0.02% sodium azide and 50% glycerol.
Concentration:	lot specific
Purification:	The antibody was affinity-purified from rabbit antiserum by affinity-chromatography using epitope-specific peptide.
Conjugation:	Unconjugated
Storage:	Store at -20°C as received.
Stability:	Stable for 12 months from date of receipt.
Predicted Protein Size:	135 kDa
Gene Name:	ABL proto-oncogene 1, non-receptor tyrosine kinase
Database Link:	NP_005148 Entrez Gene 11350 Mouse Entrez Gene 25 Human P00519
Background:	The ABL1 protooncogene encodes a cytoplasmic and nuclear protein tyrosine kinase that has been implicated in processes of cell differentiation, cell division, cell adhesion, and stress response. Activity of c-Abl protein is negatively regulated by its SH3 domain, and deletion of the SH3 domain turns ABL1 into an oncogene.



[View online »](#)

Synonyms:	ABL; abl; bcr; c-ABL; c-ABL1; JTK7; p150; v-abl
Protein Families:	Druggable Genome, Protein Kinase, Transcription Factors
Protein Pathways:	Axon guidance, Cell cycle, Chronic myeloid leukemia, ErbB signaling pathway, Neurotrophin signaling pathway, Pathogenic Escherichia coli infection, Pathways in cancer, Viral myocarditis

Product images:

Western blot analysis of Abl phosphorylation expression in Adriamycin treated COS7 whole cell lysates. The lane on the left is treated with the antigen-specific peptide.