

Product datasheet for **TA325195S**

Ccnl2 Rabbit Polyclonal Antibody

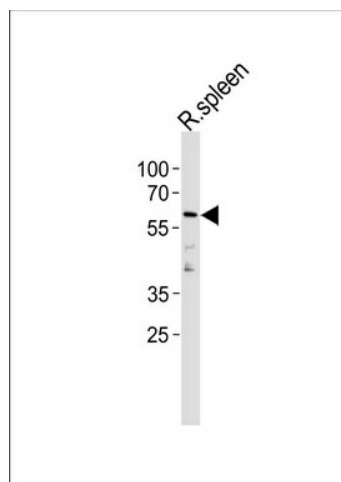
Product data:

Product Type:	Primary Antibodies
Applications:	WB
Recommended Dilution:	WB: 1:1000
Reactivity:	Rat (Predicted: Mouse)
Host:	Rabbit
Isotype:	IgG
Clonality:	Polyclonal
Immunogen:	This RAT Ccnl2 antibody is generated from rabbits immunized with a KLH conjugated synthetic peptide between 422-450 amino acids from the C-terminal region of rat Ccnl2.
Formulation:	Purified polyclonal antibody supplied in PBS with 0.09% (W/V) sodium azide.
Concentration:	lot specific
Purification:	This antibody is purified through a protein A column, followed by peptide affinity purification.
Conjugation:	Unconjugated
Storage:	Store at -20°C as received.
Stability:	Stable for 12 months from date of receipt.
Predicted Protein Size:	58246 Da
Gene Name:	cyclin L2
Database Link:	NP_001013112 Entrez Gene 56036 Mouse Entrez Gene 298686 Rat Q5I0H5
Synonyms:	ania-6b; CCNM; DKFZp761A1210; DKFZp762O195; HCLA-ISO; HLA-ISO; PCEE; SB138



[View online »](#)

Product images:



Rat Ccnl2 Antibody (C-term) (Cat. #[TA325195]) western blot analysis in rat spleen tissue lysates (35ug/lane). This demonstrates the Rat Ccnl2 antibody detected the Rat Ccnl2 protein (arrow).