

Product datasheet for **TA325194S**

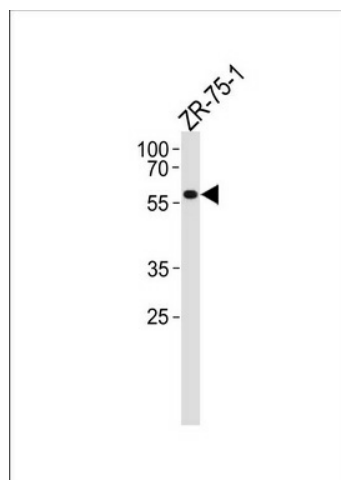
PPP2R2A Rabbit Polyclonal Antibody

Product data:

Product Type:	Primary Antibodies
Applications:	WB
Recommended Dilution:	WB: 1:1000
Reactivity:	Human (Predicted: Mouse, Rat, Pig, Monkey, Rabbit)
Host:	Rabbit
Isotype:	IgG
Clonality:	Polyclonal
Immunogen:	This PPP2R2A antibody is generated from rabbits immunized with a KLH conjugated synthetic peptide between 43-71 amino acids from the N-terminal region of human PPP2R2A.
Formulation:	Purified polyclonal antibody supplied in PBS with 0.09% (W/V) sodium azide.
Concentration:	lot specific
Purification:	This antibody is purified through a protein A column, followed by peptide affinity purification.
Conjugation:	Unconjugated
Storage:	Store at -20°C as received.
Stability:	Stable for 12 months from date of receipt.
Predicted Protein Size:	51692 Da
Gene Name:	protein phosphatase 2 regulatory subunit Balpha
Database Link:	NP_002708 Entrez Gene 71978 Mouse Entrez Gene 117104 Rat Entrez Gene 711920 Monkey Entrez Gene 5520 Human P63151
Synonyms:	B55A; B55ALPHA; PR52A; PR55A
Protein Families:	Druggable Genome, Phosphatase
Protein Pathways:	Tight junction



[View online »](#)

Product images:

PPP2R2A Antibody (N-term) (Cat. #[TA325194]) western blot analysis in ZR-75-1 cell line lysates (35ug/lane). This demonstrates the PPP2R2A antibody detected the PPP2R2A protein (arrow).