

Product datasheet for **TA325193S**

CDCA7L Rabbit Polyclonal Antibody

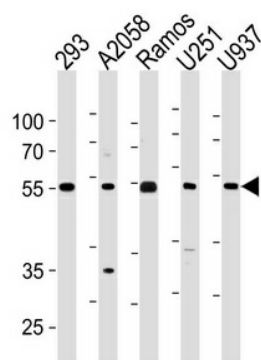
Product data:

Product Type:	Primary Antibodies
Applications:	WB
Recommended Dilution:	WB: 1:1000
Reactivity:	Human
Host:	Rabbit
Isotype:	IgG
Clonality:	Polyclonal
Immunogen:	This CDCA7L antibody is generated from rabbits immunized with a KLH conjugated synthetic peptide between 290-317 amino acids from the C-terminal region of human CDCA7L.
Formulation:	Purified polyclonal antibody supplied in PBS with 0.09% (W/V) sodium azide.
Concentration:	lot specific
Purification:	This antibody is purified through a protein A column, followed by peptide affinity purification.
Conjugation:	Unconjugated
Storage:	Store at -20°C as received.
Stability:	Stable for 12 months from date of receipt.
Gene Name:	cell division cycle associated 7 like
Database Link:	NP_061189 Entrez Gene 55536 Human Q96GN5
Synonyms:	JPO2; R1; RAM2



[View online »](#)

Product images:



CDCA7L Antibody (C-term) (Cat. #[TA325193])
western blot analysis in 293, A2058, Ramos, U251,
U937 cell line lysates (35ug/lane). This
demonstrates the CDCA7L antibody detected the
CDCA7L protein (arrow).