

## Product datasheet for **TA325193**

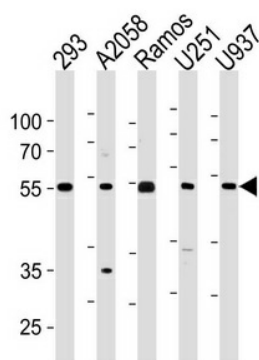
### CDCA7L Rabbit Polyclonal Antibody

#### Product data:

Product Type:	Primary Antibodies
Applications:	WB
Recommended Dilution:	WB: 1:1000
Reactivity:	Human
Host:	Rabbit
Isotype:	IgG
Clonality:	Polyclonal
Immunogen:	This CDCA7L antibody is generated from rabbits immunized with a KLH conjugated synthetic peptide between 290-317 amino acids from the C-terminal region of human CDCA7L.
Formulation:	Purified polyclonal antibody supplied in PBS with 0.09% (W/V) sodium azide.
Concentration:	lot specific
Purification:	This antibody is purified through a protein A column, followed by peptide affinity purification.
Conjugation:	Unconjugated
Storage:	Store at -20°C as received.
Stability:	Stable for 12 months from date of receipt.
Gene Name:	cell division cycle associated 7 like
Database Link:	<a href="#">NP_061189</a> <a href="#">Entrez Gene 55536 Human</a> <a href="#">Q96GN5</a>
Synonyms:	JPO2; R1; RAM2

[View online »](#)

## Product images:



CDCA7L Antibody (C-term) (Cat. #TA325193)  
western blot analysis in 293, A2058, Ramos, U251, U937 cell line lysates (35ug/lane). This demonstrates the CDCA7L antibody detected the CDCA7L protein (arrow).