

Product datasheet for **TA325191S**

SAP30BP Rabbit Polyclonal Antibody

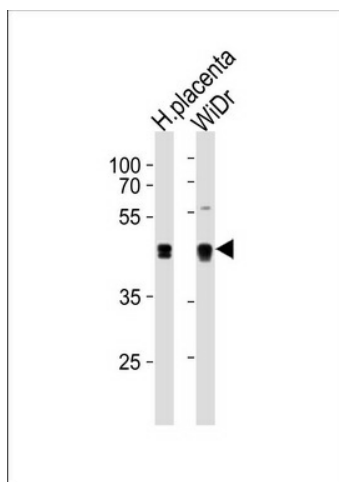
Product data:

| | |
|-------------------------|-------------------------------------------------------------------------------------------------------------------------------------------------------------------------|
| Product Type: | Primary Antibodies |
| Applications: | WB |
| Recommended Dilution: | WB: 1:1000 |
| Reactivity: | Human (Predicted: Mouse) |
| Host: | Rabbit |
| Isotype: | IgG |
| Clonality: | Polyclonal |
| Immunogen: | This SAP30BP antibody is generated from rabbits immunized with a KLH conjugated synthetic peptide between 160-188 amino acids from the Central region of human SAP30BP. |
| Formulation: | Purified polyclonal antibody supplied in PBS with 0.09% (W/V) sodium azide. |
| Concentration: | lot specific |
| Purification: | This antibody is purified through a protein A column, followed by peptide affinity purification. |
| Conjugation: | Unconjugated |
| Storage: | Store at -20°C as received. |
| Stability: | Stable for 12 months from date of receipt. |
| Predicted Protein Size: | 33870 Da |
| Gene Name: | SAP30 binding protein |
| Database Link: | NP_037392 Entrez Gene 57230 Mouse Entrez Gene 29115 Human Q9UHR5 |
| Synonyms: | HCNGP; HTRG; HTRP |



[View online »](#)

Product images:



SAP30BP Antibody (Center) (Cat. #[TA325191]) western blot analysis in WiDr cell line and human placenta tissue lysates (35ug/lane). This demonstrates the SAP30BP antibody detected the SAP30BP protein (arrow).