

## Product datasheet for **TA325191**

### SAP30BP Rabbit Polyclonal Antibody

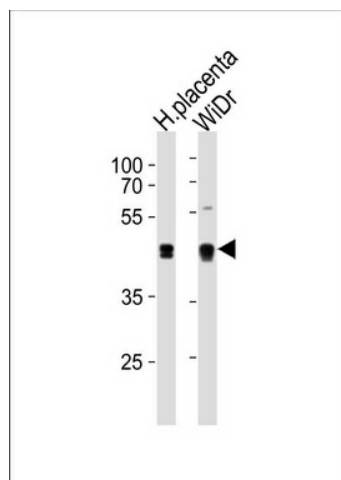
#### Product data:

Product Type:	Primary Antibodies
Applications:	WB
Recommended Dilution:	WB: 1:1000
Reactivity:	Human (Predicted: Mouse)
Host:	Rabbit
Isotype:	IgG
Clonality:	Polyclonal
Immunogen:	This SAP30BP antibody is generated from rabbits immunized with a KLH conjugated synthetic peptide between 160-188 amino acids from the Central region of human SAP30BP.
Formulation:	Purified polyclonal antibody supplied in PBS with 0.09% (W/V) sodium azide.
Concentration:	lot specific
Purification:	This antibody is purified through a protein A column, followed by peptide affinity purification.
Conjugation:	Unconjugated
Storage:	Store at -20°C as received.
Stability:	Stable for 12 months from date of receipt.
Predicted Protein Size:	33870 Da
Gene Name:	SAP30 binding protein
Database Link:	<a href="#">NP_037392</a> <a href="#">Entrez Gene 57230 Mouse</a> <a href="#">Entrez Gene 29115 Human</a> <a href="#">Q9UHR5</a>
Synonyms:	HCNGP; HTRG; HTRP



[View online »](#)

## Product images:



SAP30BP Antibody (Center) (Cat. #TA325191) western blot analysis in WiDr cell line and human placenta tissue lysates (35ug/lane). This demonstrates the SAP30BP antibody detected the SAP30BP protein (arrow).