

Product datasheet for **TA325190S**

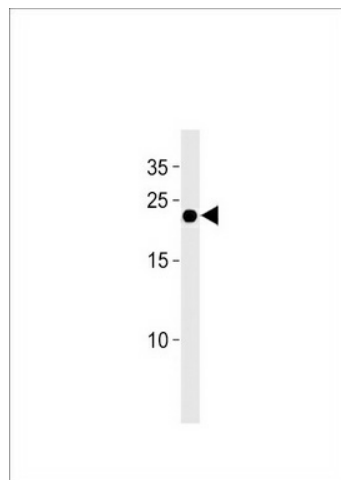
IFNA4 Rabbit Polyclonal Antibody

Product data:

Product Type:	Primary Antibodies
Applications:	WB
Recommended Dilution:	WB: 1:1000
Reactivity:	Human
Host:	Rabbit
Isotype:	IgG
Clonality:	Polyclonal
Immunogen:	This IFNA4 antibody is generated from rabbits immunized with a KLH conjugated synthetic peptide between 162-189 amino acids from the C-terminal region of human IFNA4.
Formulation:	Purified polyclonal antibody supplied in PBS with 0.09% (W/V) sodium azide.
Concentration:	lot specific
Purification:	This antibody is purified through a protein A column, followed by peptide affinity purification.
Conjugation:	Unconjugated
Storage:	Store at -20°C as received.
Stability:	Stable for 12 months from date of receipt.
Predicted Protein Size:	21808 Da
Gene Name:	interferon, alpha 4
Database Link:	NP_066546 Entrez Gene 3441 Human P05014
Synonyms:	IFN-alpha4a; INFA4
Protein Families:	Druggable Genome, Secreted Protein
Protein Pathways:	Antigen processing and presentation, Autoimmune thyroid disease, Cytokine-cytokine receptor interaction, Cytosolic DNA-sensing pathway, Jak-STAT signaling pathway, Natural killer cell mediated cytotoxicity, Regulation of autophagy, RIG-I-like receptor signaling pathway, Toll-like receptor signaling pathway



[View online »](#)

Product images:

IFNA4 Antibody (C-term) (Cat. #[TA325190]) western blot analysis in U937 cell line lysates (35ug/lane). This demonstrates the IFNA4 antibody detected the IFNA4 protein (arrow).