

Product datasheet for **TA325189S**

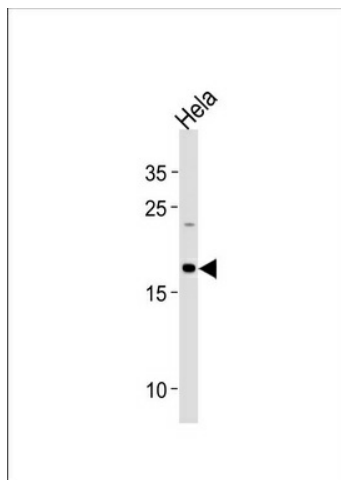
NDUFB10 Rabbit Polyclonal Antibody

Product data:

Product Type:	Primary Antibodies
Applications:	WB
Recommended Dilution:	WB: 1:1000
Reactivity:	Human (Predicted: Mouse)
Host:	Rabbit
Isotype:	IgG
Clonality:	Polyclonal
Immunogen:	This NDUFB10 antibody is generated from rabbits immunized with a KLH conjugated synthetic peptide between 43-70 amino acids from the Central region of human NDUFB10.
Formulation:	Purified polyclonal antibody supplied in PBS with 0.09% (W/V) sodium azide.
Concentration:	lot specific
Purification:	This antibody is purified through a protein A column, followed by peptide affinity purification.
Conjugation:	Unconjugated
Storage:	Store at -20°C as received.
Stability:	Stable for 12 months from date of receipt.
Predicted Protein Size:	20777 Da
Gene Name:	NADH:ubiquinone oxidoreductase subunit B10
Database Link:	NP_004539 Entrez Gene 68342 Mouse Entrez Gene 4716 Human O96000
Synonyms:	PDSW
Protein Pathways:	Alzheimer's disease, Huntington's disease, Metabolic pathways, Oxidative phosphorylation, Parkinson's disease



[View online »](#)

Product images:

NDUFB10 Antibody (Center) (Cat. #[TA325189])
western blot analysis in HeLa cell line lysates
(35ug/lane). This demonstrates the NDUFB10
antibody detected the NDUFB10 protein (arrow).