

Product datasheet for **TA325188S**

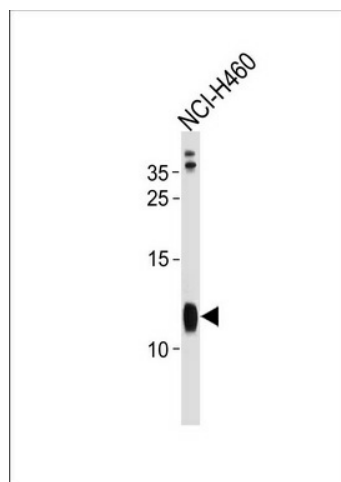
RPS21 Rabbit Polyclonal Antibody

Product data:

Product Type:	Primary Antibodies
Applications:	WB
Recommended Dilution:	WB: 1:1000
Reactivity:	Human (Predicted: Mouse, Rat, Bovine, Pig)
Host:	Rabbit
Isotype:	IgG
Clonality:	Polyclonal
Immunogen:	This RPS21 antibody is generated from rabbits immunized with a KLH conjugated synthetic peptide between 44-71 amino acids from the C-terminal region of human RPS21.
Formulation:	Purified polyclonal antibody supplied in PBS with 0.09% (W/V) sodium azide.
Concentration:	lot specific
Purification:	This antibody is purified through a protein A column, followed by peptide affinity purification.
Conjugation:	Unconjugated
Storage:	Store at -20°C as received.
Stability:	Stable for 12 months from date of receipt.
Predicted Protein Size:	9111 Da
Gene Name:	ribosomal protein S21
Database Link:	NP_001015 Entrez Gene 66481 Mouse Entrez Gene 81775 Rat Entrez Gene 6227 Human P63220
Synonyms:	HLDF; S21
Protein Pathways:	Ribosome



[View online »](#)

Product images:

RPS21 Antibody (C-term) (Cat. #[TA325188])
western blot analysis in NCI-H460 cell line lysates
(35ug/lane). This demonstrates the RPS21
antibody detected the RPS21 protein (arrow).