

Product datasheet for **TA325187S**

DNA polymerase delta p50 (POLD2) Rabbit Polyclonal Antibody

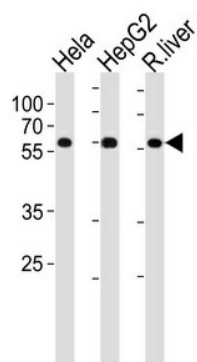
Product data:

Product Type:	Primary Antibodies
Applications:	WB
Recommended Dilution:	WB: 1:1000
Reactivity:	Human, Rat (Predicted: Mouse, Bovine)
Host:	Rabbit
Isotype:	IgG
Clonality:	Polyclonal
Immunogen:	This POLD2 antibody is generated from rabbits immunized with a KLH conjugated synthetic peptide between 237-265 amino acids from the Central region of human POLD2.
Formulation:	Purified polyclonal antibody supplied in PBS with 0.09% (W/V) sodium azide.
Concentration:	lot specific
Purification:	This antibody is purified through a protein A column, followed by peptide affinity purification.
Conjugation:	Unconjugated
Storage:	Store at -20°C as received.
Stability:	Stable for 12 months from date of receipt.
Predicted Protein Size:	51289 Da
Gene Name:	polymerase (DNA) delta 2, accessory subunit
Database Link:	NP_001120690 Entrez Gene 18972 MouseEntrez Gene 289758 RatEntrez Gene 5425 Human P49005
Synonyms:	delta 2; OTTHUMP00000024527; polymerase (DNA directed); regulatory subunit; regulatory subunit (50kD); regulatory subunit 50kDa
Protein Families:	Stem cell - Pluripotency
Protein Pathways:	Base excision repair, DNA replication, Homologous recombination, Metabolic pathways, Mismatch repair, Nucleotide excision repair, Purine metabolism, Pyrimidine metabolism



[View online »](#)

Product images:



POLD2 Antibody (Center) (Cat. #[TA325187]) western blot analysis in HeLa, HepG2 cell line and rat liver tissue lysates (35ug/lane). This demonstrates the POLD2 antibody detected the POLD2 protein (arrow).