

## Product datasheet for **TA325183S**

### gamma Sarcoglycan (SGCG) Rabbit Polyclonal Antibody

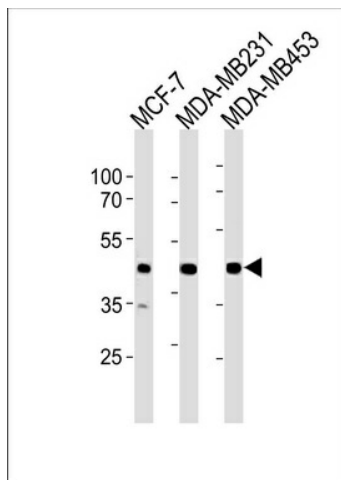
#### Product data:

|                         |   |
|-------------------------|---|
| Product Type:           | Primary Antibodies  |
| Applications:           | WB  |
| Recommended Dilution:   | WB: 1:1000  |
| Reactivity:             | Human (Predicted: Bovine)   |
| Host:                   | Rabbit  |
| Isotype:                | IgG   |
| Clonality:              | Polyclonal  |
| Immunogen:              | This SGCG antibody is generated from rabbits immunized with a KLH conjugated synthetic peptide between 145-172 amino acids from the Central region of human SGCG. |
| Formulation:            | Purified polyclonal antibody supplied in PBS with 0.09% (W/V) sodium azide.   |
| Concentration:          | lot specific  |
| Purification:           | This antibody is purified through a protein A column, followed by peptide affinity purification.  |
| Conjugation:            | Unconjugated  |
| Storage:                | Store at -20°C as received.   |
| Stability:              | Stable for 12 months from date of receipt.  |
| Predicted Protein Size: | 32379 Da  |
| Gene Name:              | sarcoglycan gamma   |
| Database Link:          | <a href="#">NP_000222</a><br><a href="#">Entrez Gene 6445 Human</a><br><a href="#">Q13326</a>   |
| Synonyms:               | A4; DAGA4; DMDA; DMDA1; LGMD2C; MAM; SCARMD2; SCG3; TYPE  |
| Protein Families:       | Druggable Genome, Transmembrane   |
| Protein Pathways:       | Arrhythmogenic right ventricular cardiomyopathy (ARVC), Dilated cardiomyopathy, Hypertrophic cardiomyopathy (HCM), Viral myocarditis                              |



[View online »](#)

## Product images:



SGCG Antibody (Center) (Cat. #[TA325183])  
western blot analysis in MCF-7, MDA-MB231,  
MDA-MB453 cell line lysates (35ug/lane). This  
demonstrates the SGCG antibody detected the  
SGCG protein (arrow).