

Product datasheet for **TA325181S**

BAP31 (BCAP31) Rabbit Polyclonal Antibody

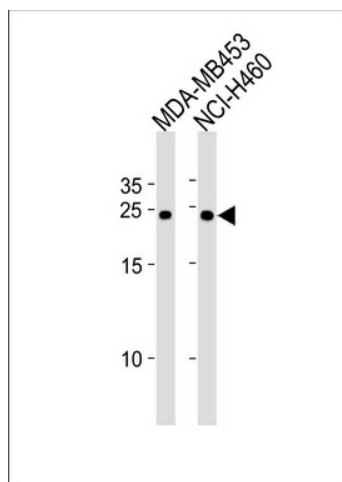
Product data:

Product Type:	Primary Antibodies
Applications:	WB
Recommended Dilution:	WB: 1:1000
Reactivity:	Human
Host:	Rabbit
Isotype:	IgG
Clonality:	Polyclonal
Immunogen:	This BCAP31 antibody is generated from rabbits immunized with a KLH conjugated synthetic peptide between 120-147 amino acids from the Central region of human BCAP31.
Formulation:	Purified polyclonal antibody supplied in PBS with 0.09% (W/V) sodium azide.
Concentration:	lot specific
Purification:	This antibody is purified through a protein A column, followed by peptide affinity purification.
Conjugation:	Unconjugated
Storage:	Store at -20°C as received.
Stability:	Stable for 12 months from date of receipt.
Predicted Protein Size:	27992 Da
Gene Name:	B-cell receptor-associated protein 31
Database Link:	NP_001132913 Entrez Gene 10134 Human P51572
Synonyms:	6C6-AG; BAP31; CDM; DDCH; DXS1357E
Protein Families:	Druggable Genome, Transmembrane



[View online »](#)

Product images:



BCAP31 Antibody (Center) (Cat. #[TA325181])
western blot analysis in MDA-MB453, NCI-H460
cell line lysates (35ug/lane). This demonstrates the
BCAP31 antibody detected the BCAP31 protein
(arrow).