

Product datasheet for **TA325180S**

Cask Rabbit Polyclonal Antibody

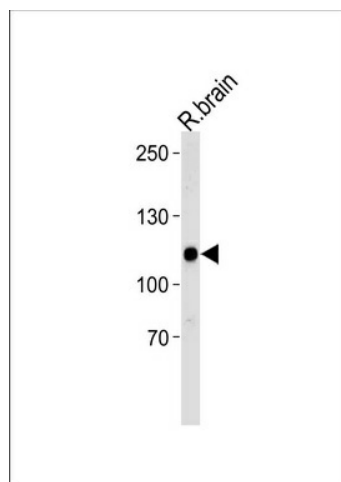
Product data:

Product Type:	Primary Antibodies
Applications:	WB
Recommended Dilution:	WB: 1:1000
Reactivity:	Rat (Predicted: Human, Mouse)
Host:	Rabbit
Isotype:	IgG
Clonality:	Polyclonal
Immunogen:	This Rat Cask antibody is generated from rabbits immunized with a KLH conjugated synthetic peptide between 589-616 amino acids from the Central region of rat Cask.
Formulation:	Purified polyclonal antibody supplied in PBS with 0.09% (W/V) sodium azide.
Concentration:	lot specific
Purification:	This antibody is purified through a protein A column, followed by peptide affinity purification.
Conjugation:	Unconjugated
Storage:	Store at -20°C as received.
Stability:	Stable for 12 months from date of receipt.
Predicted Protein Size:	103259 Da
Gene Name:	calcium/calmodulin-dependent serine protein kinase (MAGUK family)
Database Link:	NP_071520 Entrez Gene 8573 Human Entrez Gene 12361 Mouse Entrez Gene 29647 Rat Q62915
Synonyms:	CAGH39; CMG; FGS4; FLJ22219; FLJ31914; hCASK; LIN2; MICPCH; TNRC8



[View online »](#)

Product images:



Rat Cask Antibody (Center) (Cat. #[TA325180]) western blot analysis in rat brain tissue lysates (35ug/lane). This demonstrates the Rat Cask antibody detected the Rat Cask protein (arrow).