

Product datasheet for **TA325176S**

AKT1 Mouse Monoclonal Antibody [Clone ID: 960CT4.5.1]

Product data:

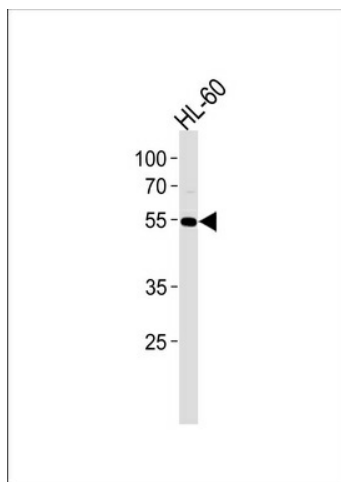
Product Type:	Primary Antibodies
Clone Name:	960CT4.5.1
Applications:	WB
Recommended Dilution:	WB: 1:5000
Reactivity:	Human (Predicted: Mouse, Rat, Bovine)
Host:	Mouse
Isotype:	IgG1
Clonality:	Monoclonal
Immunogen:	This AKT1 Monoclonal antibody is generated from mice immunized with a KLH conjugated synthetic peptide selected from the 430-460 region of human AKT1.
Formulation:	Mouse monoclonal antibody supplied in crude ascites with 0.09% (W/V) sodium azide.
Concentration:	lot specific
Conjugation:	Unconjugated
Storage:	Store at -20°C as received.
Stability:	Stable for 12 months from date of receipt.
Predicted Protein Size:	55686 Da
Gene Name:	AKT serine/threonine kinase 1
Database Link:	NP_001014431 Entrez Gene 11651 Mouse Entrez Gene 24185 Rat Entrez Gene 207 Human P31749
Synonyms:	AKT; CWS6; PKB; PKB-ALPHA; PRKBA; RAC; RAC-ALPHA
Protein Families:	Druggable Genome, ES Cell Differentiation/IPS, Protein Kinase



[View online »](#)

Protein Pathways:

Acute myeloid leukemia, Adipocytokine signaling pathway, Apoptosis, B cell receptor signaling pathway, Chemokine signaling pathway, Chronic myeloid leukemia, Colorectal cancer, Endometrial cancer, ErbB signaling pathway, Fc epsilon RI signaling pathway, Fc gamma R-mediated phagocytosis, Focal adhesion, Glioma, Insulin signaling pathway, Jak-STAT signaling pathway, MAPK signaling pathway, Melanoma, mTOR signaling pathway, Neurotrophin signaling pathway, Non-small cell lung cancer, Pancreatic cancer, Pathways in cancer, Progesterone-mediated oocyte maturation, Prostate cancer, Renal cell carcinoma, Small cell lung cancer, T cell receptor signaling pathway, Tight junction, Toll-like receptor signaling pathway, VEGF signaling pathway

Product images:

AKT1 Antibody (MS4188) western blot analysis in HL-60 cell line lysates (35ug/lane). This demonstrates the AKT1 antibody detected the AKT1 protein (arrow).