

Product datasheet for **TA325174S**

Calbindin (CALB1) Rabbit Polyclonal Antibody

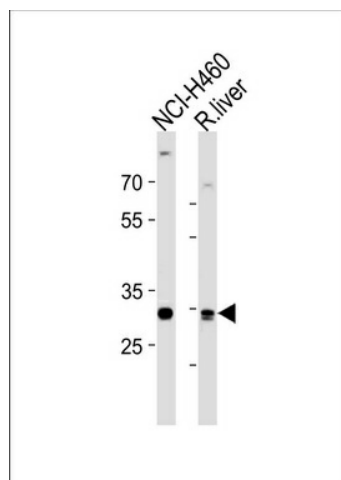
Product data:

Product Type:	Primary Antibodies
Applications:	WB
Recommended Dilution:	WB: 1:1000
Reactivity:	Human, Rat (Predicted: Mouse, Bovine)
Host:	Rabbit
Isotype:	IgG
Clonality:	Polyclonal
Immunogen:	This CALB1 antibody is generated from rabbits immunized with a KLH conjugated synthetic peptide between 90-116 amino acids from the Central region of human CALB1.
Formulation:	Purified polyclonal antibody supplied in PBS with 0.09% (W/V) sodium azide.
Concentration:	lot specific
Purification:	This antibody is purified through a protein A column, followed by peptide affinity purification.
Conjugation:	Unconjugated
Storage:	Store at -20°C as received.
Stability:	Stable for 12 months from date of receipt.
Predicted Protein Size:	30025 Da
Gene Name:	calbindin 1
Database Link:	NP_004920 Entrez Gene 12307 Mouse Entrez Gene 83839 Rat Entrez Gene 793 Human P05937
Synonyms:	CALB; D-28K



[View online »](#)

Product images:



CALB1 Antibody (Center) (Cat. #[TA325174])
western blot analysis in NCI-H460 cell line and rat
liver tissue lysates (35ug/lane). This demonstrates
the CALB1 antibody detected the CALB1 protein
(arrow).