

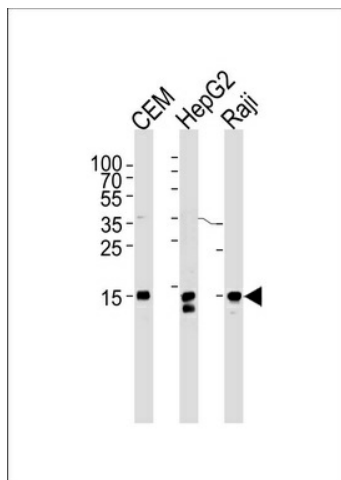
## Product datasheet for TA325173S

### Histone H2A.X (H2AFX) Mouse Monoclonal Antibody [Clone ID: 980CT1.5.5]

#### Product data:

Product Type:	Primary Antibodies
Clone Name:	980CT1.5.5
Applications:	WB
Recommended Dilution:	WB: 1:1000
Reactivity:	Human (Predicted: Mouse, Zebrafish)
Host:	Mouse
Isotype:	IgG1
Clonality:	Monoclonal
Immunogen:	This H2AFX antibody is generated from mice immunized with a KLH conjugated synthetic peptide between 1-30 amino acids from the N-terminal region of human H2AFX.
Formulation:	Purified monoclonal antibody supplied in PBS with 0.09% (W/V) sodium azide.
Concentration:	lot specific
Purification:	This antibody is purified through a protein G column, followed by dialysis against PBS.
Conjugation:	Unconjugated
Storage:	Store at -20°C as received.
Stability:	Stable for 12 months from date of receipt.
Predicted Protein Size:	15145 Da
Gene Name:	H2A histone family member X
Database Link:	<a href="#">NP_002096</a> <a href="#">Entrez Gene 15270 Mouse</a> <a href="#">Entrez Gene 3014 Human</a> <a href="#">P16104</a>
Synonyms:	H2A; H2A.X; H2AX; X
Protein Families:	Druggable Genome
Protein Pathways:	Systemic lupus erythematosus


[View online »](#)

**Product images:**

H2AFX Antibody (N-term) (Cat. #TA325173])  
western blot analysis in CEM, HepG2, Raji cell line  
lysates (35ug/lane). This demonstrates the H2AFX  
antibody detected the H2AFX protein (arrow).