

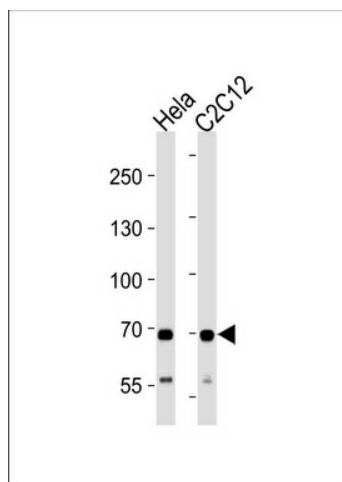
Product datasheet for **TA325170S**

SDHA Rabbit Polyclonal Antibody

Product data:

Product Type:	Primary Antibodies
Applications:	WB
Recommended Dilution:	WB: 1:1000
Reactivity:	Human (Predicted: Rat, Xenopus)
Host:	Rabbit
Isotype:	IgG
Clonality:	Polyclonal
Immunogen:	This SDHA antibody is generated from rabbits immunized with a KLH conjugated synthetic peptide between 577-605 amino acids from the C-terminal region of human SDHA.
Formulation:	Purified polyclonal antibody supplied in PBS with 0.09% (W/V) sodium azide.
Concentration:	lot specific
Purification:	This antibody is purified through a protein A column, followed by peptide affinity purification.
Conjugation:	Unconjugated
Storage:	Store at -20°C as received.
Stability:	Stable for 12 months from date of receipt.
Predicted Protein Size:	72692 Da
Gene Name:	succinate dehydrogenase complex flavoprotein subunit A
Database Link:	NP_004159 Entrez Gene 157074 Rat Entrez Gene 6389 Human P31040
Synonyms:	CMD1GG; FP; PGL5; SDH1; SDH2; SDHF
Protein Families:	Druggable Genome
Protein Pathways:	Alzheimer's disease, Citrate cycle (TCA cycle), Huntington's disease, Metabolic pathways, Oxidative phosphorylation, Parkinson's disease

[View online »](#)

Product images:

SDHA Antibody (C-term) (Cat. #TA325170])
western blot analysis in HeLa and mouse C2C12
cell line lysates (35ug/lane). This demonstrates the
DHSA antibody detected the DHSA protein
(arrow).