

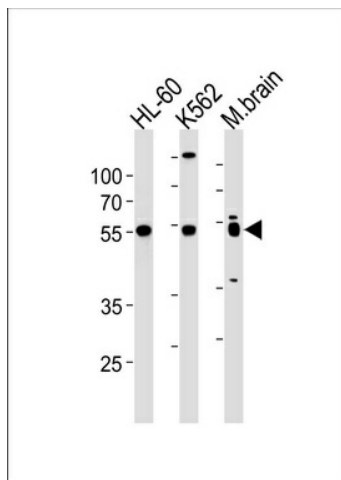
Product datasheet for TA325166S

EP4 (PTGER4) Rabbit Polyclonal Antibody

Product data:

Product Type:	Primary Antibodies
Applications:	WB
Recommended Dilution:	WB: 1:1000
Reactivity:	Human, Mouse (Predicted: Rat, Bovine, Rabbit)
Host:	Rabbit
Isotype:	IgG
Clonality:	Polyclonal
Immunogen:	This PTGER4 antibody is generated from rabbits immunized with a KLH conjugated synthetic peptide between 242-269 amino acids from the Central region of human PTGER4.
Formulation:	Purified polyclonal antibody supplied in PBS with 0.09% (W/V) sodium azide.
Concentration:	lot specific
Purification:	This antibody is purified through a protein A column, followed by peptide affinity purification.
Conjugation:	Unconjugated
Storage:	Store at -20°C as received.
Stability:	Stable for 12 months from date of receipt.
Predicted Protein Size:	53119 Da
Gene Name:	prostaglandin E receptor 4
Database Link:	NP_000949 Entrez Gene 19219 Mouse Entrez Gene 84023 Rat Entrez Gene 5734 Human P35408
Synonyms:	EP4; EP4R
Protein Families:	Druggable Genome, GPCR, Transmembrane
Protein Pathways:	Neuroactive ligand-receptor interaction


[View online »](#)

Product images:

PTGER4 Antibody (Center) (Cat. #TA325166])
western blot analysis in HL-60, K562 cell line and
mouse brain lysates (35ug/lane). This
demonstrates the PTGER4 antibody detected the
PTGER4 protein (arrow).