

Product datasheet for **TA325163S**

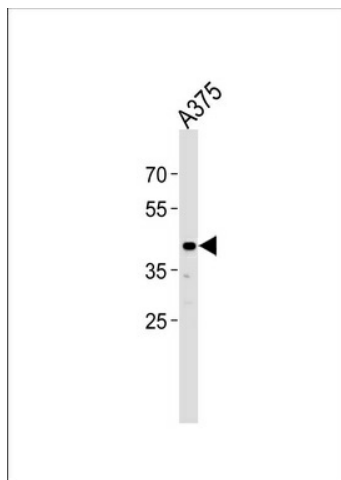
SIRPB1 Rabbit Polyclonal Antibody

Product data:

Product Type:	Primary Antibodies
Applications:	WB
Recommended Dilution:	WB: 1:1000
Reactivity:	Human
Host:	Rabbit
Isotype:	IgG
Clonality:	Polyclonal
Immunogen:	This SIRPB1 antibody is generated from rabbits immunized with a KLH conjugated synthetic peptide between 17-43 amino acids from the N-terminal region of human SIRPB1.
Formulation:	Purified polyclonal antibody supplied in PBS with 0.09% (W/V) sodium azide.
Concentration:	lot specific
Purification:	This antibody is purified through a protein A column, followed by peptide affinity purification.
Conjugation:	Unconjugated
Storage:	Store at -20°C as received.
Stability:	Stable for 12 months from date of receipt.
Predicted Protein Size:	43359 Da
Gene Name:	signal regulatory protein beta 1
Database Link:	NP_006056 Entrez Gene 10326 Human O00241
Synonyms:	CD172b; SIRP-BETA-1
Protein Families:	Druggable Genome, Transmembrane



[View online »](#)

Product images:

SIRPB1 Antibody (N-term) (Cat. #[TA325163])
western blot analysis in A375 cell line lysates
(35ug/lane). This demonstrates the SIRPB1
antibody detected the SIRPB1 protein (arrow).