

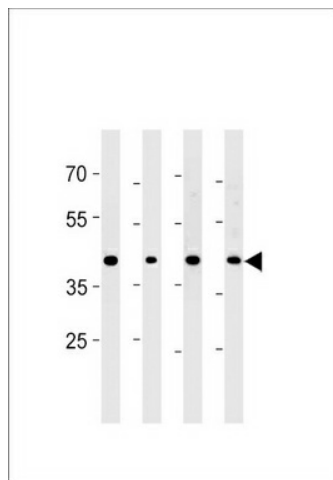
## Product datasheet for **TA325162S**

### CABLES2 Rabbit Polyclonal Antibody

#### Product data:

Product Type:	Primary Antibodies
Applications:	WB
Recommended Dilution:	WB: 1:1000
Reactivity:	Human, Mouse
Host:	Rabbit
Isotype:	IgG
Clonality:	Polyclonal
Immunogen:	This CABLES2 antibody is generated from rabbits immunized with a KLH conjugated synthetic peptide between 182-210 amino acids from the Central region of human CABLES2.
Formulation:	Purified polyclonal antibody supplied in PBS with 0.09% (W/V) sodium azide.
Concentration:	lot specific
Purification:	This antibody is purified through a protein A column, followed by peptide affinity purification.
Conjugation:	Unconjugated
Storage:	Store at -20°C as received.
Stability:	Stable for 12 months from date of receipt.
Predicted Protein Size:	52235 Da
Gene Name:	Cdk5 and Abl enzyme substrate 2
Database Link:	<a href="#">NP_112492</a> <a href="#">Entrez Gene 252966 Mouse</a> <a href="#">Entrez Gene 81928 Human</a> <a href="#">Q9BTV7</a>
Synonyms:	C20orf150; dj908M14.2; ik3-2

[View online »](#)

**Product images:**


CABLES2 Antibody (Center) (Cat. #[TA325162]) western blot analysis in PC-3 cell line and mouse brain, testis and liver lysates (35ug/lane). This demonstrates the CABLES2 antibody detected the CABLES2 protein (arrow).