

## Product datasheet for **TA325161S**

### FAM50A Rabbit Polyclonal Antibody

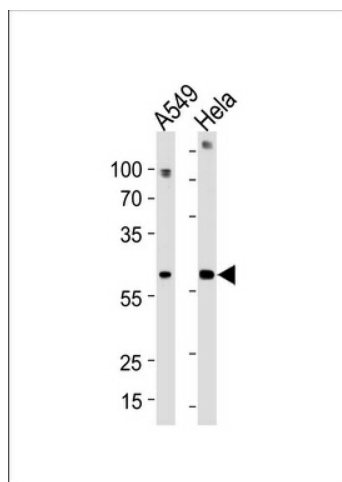
#### Product data:

Product Type:	Primary Antibodies
Applications:	WB
Recommended Dilution:	WB: 1:1000
Reactivity:	Human (Predicted: Mouse, Zebrafish, Xenopus)
Host:	Rabbit
Isotype:	IgG
Clonality:	Polyclonal
Immunogen:	This FAM50A antibody is generated from rabbits immunized with a KLH conjugated synthetic peptide between 311-339 amino acids from the C-terminal region of human FAM50A.
Formulation:	Purified polyclonal antibody supplied in PBS with 0.09% (W/V) sodium azide.
Concentration:	lot specific
Purification:	This antibody is purified through a protein A column, followed by peptide affinity purification.
Conjugation:	Unconjugated
Storage:	Store at -20°C as received.
Stability:	Stable for 12 months from date of receipt.
Predicted Protein Size:	40242 Da
Gene Name:	family with sequence similarity 50 member A
Database Link:	<a href="#">NP_004690</a> <a href="#">Entrez Gene 108160 Mouse</a> <a href="#">Entrez Gene 9130 Human</a> <a href="#">Q14320</a>
Synonyms:	9F; DXS9928E; HXC-26; HXC26; XAP5



[View online »](#)

## Product images:



FAM50A Antibody (C-term) (Cat. #[TA325161]) western blot analysis in A549, HeLa cell line lysates (35ug/lane). This demonstrates the FAM50A antibody detected the FAM50A protein (arrow).