

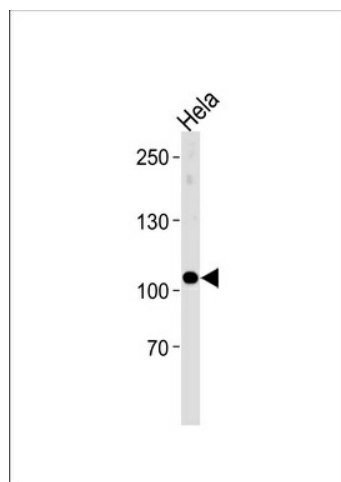
Product datasheet for **TA325160S**

UBE3C Rabbit Polyclonal Antibody

Product data:

Product Type:	Primary Antibodies
Applications:	WB
Recommended Dilution:	WB: 1:1000
Reactivity:	Human
Host:	Rabbit
Isotype:	IgG
Clonality:	Polyclonal
Immunogen:	This UBE3C antibody is generated from rabbits immunized with a KLH conjugated synthetic peptide between 549-578 amino acids from the Central region of human UBE3C.
Formulation:	Purified polyclonal antibody supplied in PBS with 0.09% (W/V) sodium azide.
Concentration:	lot specific
Purification:	This antibody is purified through a protein A column, followed by peptide affinity purification.
Conjugation:	Unconjugated
Storage:	Store at -20°C as received.
Stability:	Stable for 12 months from date of receipt.
Predicted Protein Size:	123923 Da
Gene Name:	ubiquitin protein ligase E3C
Database Link:	NP_055486 Entrez Gene 9690 Human Q15386
Synonyms:	HECTH2
Protein Families:	Druggable Genome
Protein Pathways:	Ubiquitin mediated proteolysis

[View online »](#)

Product images:


UBE3C Antibody (Center) (Cat. #TA325160])
western blot analysis in HeLa cell line lysates
(35ug/lane). This demonstrates the UBE3C
antibody detected the UBE3C protein (arrow).