

Product datasheet for TA325159S

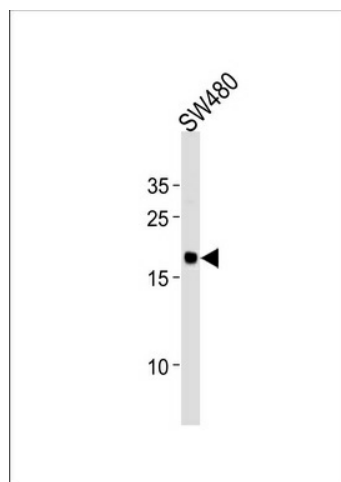
RPL29 Rabbit Polyclonal Antibody

Product data:

Product Type:	Primary Antibodies
Applications:	WB
Recommended Dilution:	WB: 1:1000
Reactivity:	Human (Predicted: Monkey)
Host:	Rabbit
Isotype:	IgG
Clonality:	Polyclonal
Immunogen:	This RPL29 antibody is generated from rabbits immunized with a KLH conjugated synthetic peptide between 71-98 amino acids from the Central region of human RPL29.
Formulation:	Purified polyclonal antibody supplied in PBS with 0.09% (W/V) sodium azide.
Concentration:	lot specific
Purification:	This antibody is purified through a protein A column, followed by peptide affinity purification.
Conjugation:	Unconjugated
Storage:	Store at -20°C as received.
Stability:	Stable for 12 months from date of receipt.
Predicted Protein Size:	17752 Da
Gene Name:	ribosomal protein L29
Database Link:	NP_000983 Entrez Gene 106992267 Monkey Entrez Gene 6159 Human P47914
Synonyms:	HIP; HUMRPL29; L29; RPL29P10; RPL29_3_370
Protein Pathways:	Ribosome



[View online »](#)

Product images:

RPL29 Antibody (Center) (Cat. #[TA325159])
western blot analysis in SW480 cell line lysates
(35ug/lane). This demonstrates the RPL29
antibody detected the RPL29 protein (arrow).