

Product datasheet for **TA325157S**

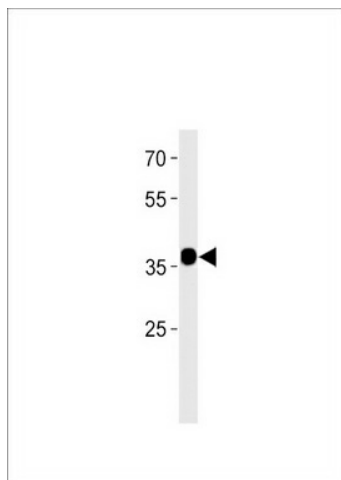
C2ORF47 (MAIP1) Rabbit Polyclonal Antibody

Product data:

Product Type:	Primary Antibodies
Applications:	WB
Recommended Dilution:	WB: 1:1000
Reactivity:	Human (Predicted: Mouse, Rat, Bovine)
Host:	Rabbit
Isotype:	IgG
Clonality:	Polyclonal
Immunogen:	This C2orf47 antibody is generated from rabbits immunized with a KLH conjugated synthetic peptide between 190-219 amino acids from the C-terminal region of human C2orf47.
Formulation:	Purified polyclonal antibody supplied in PBS with 0.09% (W/V) sodium azide.
Concentration:	lot specific
Purification:	This antibody is purified through a protein A column, followed by peptide affinity purification.
Conjugation:	Unconjugated
Storage:	Store at -20°C as received.
Stability:	Stable for 12 months from date of receipt.
Predicted Protein Size:	32545 Da
Gene Name:	chromosome 2 open reading frame 47
Database Link:	NP_078796 Entrez Gene 68115 MouseEntrez Gene 301418 RatEntrez Gene 79568 Human Q8WWC4
Synonyms:	DKFZp666A212; FLJ22555



[View online »](#)

Product images:

C2orf47 Antibody (C-term) (Cat. #[TA325157]) western blot analysis in MCF-7 cell line lysates (35ug/lane). This demonstrates the C2orf47 antibody detected the C2orf47 protein (arrow).