

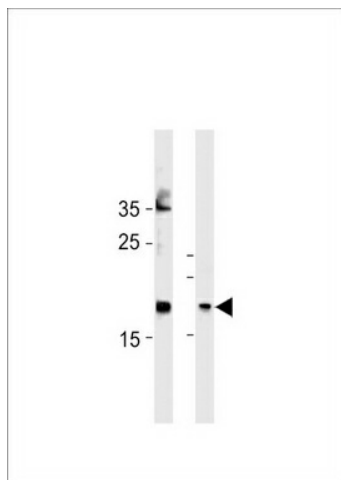
Product datasheet for **TA325156S**

SHISAL2A Rabbit Polyclonal Antibody

Product data:

Product Type:	Primary Antibodies
Applications:	WB
Recommended Dilution:	WB: 1:1000
Reactivity:	Human, Mouse
Host:	Rabbit
Isotype:	IgG
Clonality:	Polyclonal
Immunogen:	This FAM159A antibody is generated from rabbits immunized with a KLH conjugated synthetic peptide between 89-115 amino acids from the Central region of human FAM159A.
Formulation:	Purified polyclonal antibody supplied in PBS with 0.09% (W/V) sodium azide.
Concentration:	lot specific
Purification:	This antibody is purified through a protein A column, followed by peptide affinity purification.
Conjugation:	Unconjugated
Storage:	Store at -20°C as received.
Stability:	Stable for 12 months from date of receipt.
Predicted Protein Size:	20306 Da
Gene Name:	family with sequence similarity 159 member A
Database Link:	NP_001036158 Entrez Gene 545667 Mouse Entrez Gene 348378 Human Q6UWV7
Synonyms:	PRO7171; WWLS2783
Protein Families:	Transmembrane

[View online »](#)

Product images:

FAM159A Antibody (Center) (Cat. #[TA325156]) western blot analysis in HeLa cell line and mouse bladder tissue lysates (35ug/lane). This demonstrates the FAM159A antibody detected the FAM159A protein (arrow).