

Product datasheet for TA325154S

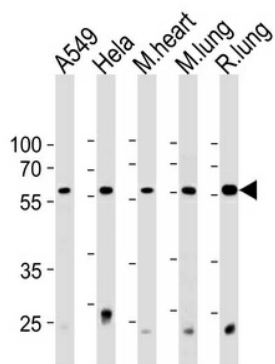
S4 (PSMC1) Rabbit Polyclonal Antibody

Product data:

Product Type:	Primary Antibodies
Applications:	WB
Recommended Dilution:	WB: 1:1000
Reactivity:	Human, Mouse, Rat
Host:	Rabbit
Isotype:	IgG
Clonality:	Polyclonal
Immunogen:	This PRS4 antibody is generated from rabbits immunized with a KLH conjugated synthetic peptide between 408-436 amino acids from the C-terminal region of human PRS4.
Formulation:	Purified polyclonal antibody supplied in PBS with 0.09% (W/V) sodium azide.
Concentration:	lot specific
Purification:	This antibody is purified through a protein A column, followed by peptide affinity purification.
Conjugation:	Unconjugated
Storage:	Store at -20°C as received.
Stability:	Stable for 12 months from date of receipt.
Predicted Protein Size:	49185 Da
Gene Name:	proteasome 26S subunit, ATPase 1
Database Link:	NP_002793 Entrez Gene 19179 Mouse Entrez Gene 117263 Rat Entrez Gene 5700 Human P62191
Synonyms:	P26S4; p56; S4
Protein Pathways:	Proteasome


[View online »](#)

Product images:



PRS4 Antibody (C-term) (Cat. #TA325154)
western blot analysis in A549, HeLa