

Product datasheet for **TA325154**

S4 (PSMC1) Rabbit Polyclonal Antibody

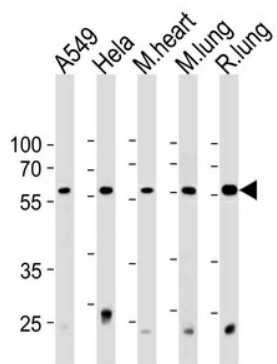
Product data:

| | |
|-------------------------|--|
| Product Type: | Primary Antibodies |
| Applications: | WB |
| Recommended Dilution: | WB: 1:1000 |
| Reactivity: | Human, Mouse, Rat |
| Host: | Rabbit |
| Isotype: | IgG |
| Clonality: | Polyclonal |
| Immunogen: | This PRS4 antibody is generated from rabbits immunized with a KLH conjugated synthetic peptide between 408-436 amino acids from the C-terminal region of human PRS4. |
| Formulation: | Purified polyclonal antibody supplied in PBS with 0.09% (W/V) sodium azide. |
| Concentration: | lot specific |
| Purification: | This antibody is purified through a protein A column, followed by peptide affinity purification. |
| Conjugation: | Unconjugated |
| Storage: | Store at -20°C as received. |
| Stability: | Stable for 12 months from date of receipt. |
| Predicted Protein Size: | 49185 Da |
| Gene Name: | proteasome 26S subunit, ATPase 1 |
| Database Link: | NP_002793 Entrez Gene 19179 MouseEntrez Gene 117263 RatEntrez Gene 5700 Human P62191 |
| Synonyms: | P26S4; p56; S4 |
| Protein Pathways: | Proteasome |



[View online »](#)

Product images:



PRS4 Antibody (C-term) (Cat. #TA325154) western blot analysis in A549, HeLa