

Product datasheet for **TA325153**

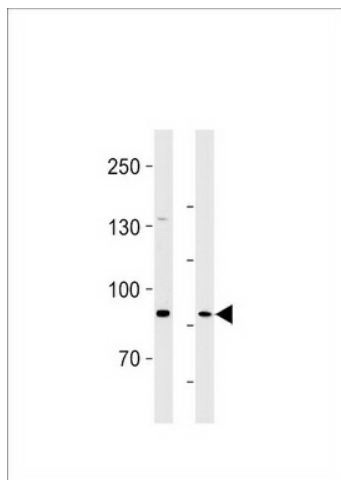
SEMA6B Rabbit Polyclonal Antibody

Product data:

Product Type:	Primary Antibodies
Applications:	WB
Recommended Dilution:	WB: 1:1000
Reactivity:	Human, Rat
Host:	Rabbit
Isotype:	IgG
Clonality:	Polyclonal
Immunogen:	This SEMA6B antibody is generated from rabbits immunized with a KLH conjugated synthetic peptide between 830-859 amino acids from the C-terminal region of human SEMA6B.
Formulation:	Purified polyclonal antibody supplied in PBS with 0.09% (W/V) sodium azide.
Concentration:	lot specific
Purification:	This antibody is purified through a protein A column, followed by peptide affinity purification.
Conjugation:	Unconjugated
Storage:	Store at -20°C as received.
Stability:	Stable for 12 months from date of receipt.
Predicted Protein Size:	95285 Da
Gene Name:	semaphorin 6B
Database Link:	NP_115484 Entrez Gene 84609 Rat Entrez Gene 10501 Human Q9H3T3
Synonyms:	SEM-SEMA-Y; SEMA-VIB; SEMAN; semaZ
Protein Families:	Transmembrane
Protein Pathways:	Axon guidance



[View online »](#)

Product images:

SEMA6B Antibody (C-term) (Cat. #TA325153)
western blot analysis in U87-MG