

Product datasheet for **TA325151S**

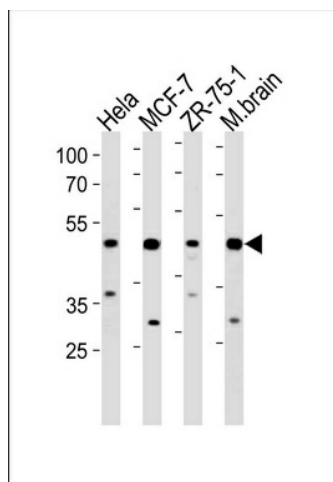
FBXO28 Rabbit Polyclonal Antibody

Product data:

Product Type:	Primary Antibodies
Applications:	WB
Recommended Dilution:	WB: 1:1000
Reactivity:	Human, Mouse (Predicted: Bovine)
Host:	Rabbit
Isotype:	IgG
Clonality:	Polyclonal
Immunogen:	This FBXO28 antibody is generated from rabbits immunized with a KLH conjugated synthetic peptide between 339-368 amino acids from the C-terminal region of human FBXO28.
Formulation:	Purified polyclonal antibody supplied in PBS with 0.09% (W/V) sodium azide.
Concentration:	lot specific
Purification:	This antibody is purified through a protein A column, followed by peptide affinity purification.
Conjugation:	Unconjugated
Storage:	Store at -20°C as received.
Stability:	Stable for 12 months from date of receipt.
Predicted Protein Size:	41149 Da
Gene Name:	F-box protein 28
Database Link:	NP_055991 Entrez Gene 67948 Mouse Entrez Gene 23219 Human Q9NVF7
Synonyms:	CENP-30; Fbx28
Protein Families:	Druggable Genome



[View online »](#)

Product images:


FBXO28 Antibody (C-term) (Cat. #[TA325151])
western blot analysis in HeLa, MCF-7, ZR-75-1 cell
line and mouse brain lysates (35ug/lane). This
demonstrates the FBXO28 antibody detected the
FBXO28 protein (arrow).