

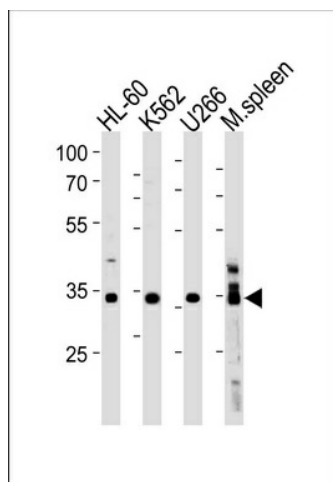
Product datasheet for TA325150S

GFI1B Rabbit Polyclonal Antibody

Product data:

Product Type:	Primary Antibodies
Applications:	WB
Recommended Dilution:	WB: 1:1000
Reactivity:	Human, Mouse
Host:	Rabbit
Isotype:	IgG
Clonality:	Polyclonal
Immunogen:	This GFI1B antibody is generated from rabbits immunized with a KLH conjugated synthetic peptide between 302-330 amino acids from the C-terminal region of human GFI1B.
Formulation:	Purified polyclonal antibody supplied in PBS with 0.09% (W/V) sodium azide.
Concentration:	lot specific
Purification:	This antibody is purified through a protein A column, followed by peptide affinity purification.
Conjugation:	Unconjugated
Storage:	Store at -20°C as received.
Stability:	Stable for 12 months from date of receipt.
Predicted Protein Size:	37492 Da
Gene Name:	growth factor independent 1B transcriptional repressor
Database Link:	NP_001128503 Entrez Gene 14582 Mouse Entrez Gene 8328 Human Q5VTD9
Synonyms:	BDPLT17; ZNF163B


[View online »](#)

Product images:


GFI1B Antibody (C-term) (Cat. #[TA325150])
western blot analysis in HL-60, K562, U266