

## Product datasheet for **TA325149S**

### ZRSR2 Rabbit Polyclonal Antibody

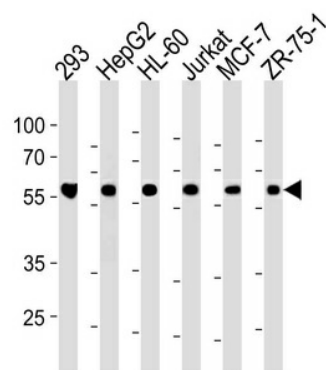
#### Product data:

Product Type:	Primary Antibodies
Applications:	WB
Recommended Dilution:	WB: 1:1000
Reactivity:	Human
Host:	Rabbit
Isotype:	IgG
Clonality:	Polyclonal
Immunogen:	This ZRSR2 antibody is generated from rabbits immunized with a KLH conjugated synthetic peptide between 453-482 amino acids from the C-terminal region of human ZRSR2.
Formulation:	Purified polyclonal antibody supplied in PBS with 0.09% (W/V) sodium azide.
Concentration:	lot specific
Purification:	This antibody is purified through a protein A column, followed by peptide affinity purification.
Conjugation:	Unconjugated
Storage:	Store at -20°C as received.
Stability:	Stable for 12 months from date of receipt.
Predicted Protein Size:	58045 Da
Gene Name:	zinc finger CCCH-type, RNA binding motif and serine/arginine rich 2
Database Link:	<a href="#">NP_005080</a> <a href="#">Entrez Gene 8233 Human</a> <a href="#">Q15696</a>
Synonyms:	U2AF1-RS2; U2AF1L2; U2AF1RS2; URP



[View online »](#)

## Product images:



ZRSR2 Antibody (C-term) (Cat. #TA325149])  
western blot analysis in 293, HepG2, HL-60, Jurkat,  
MCF-7, ZR-75-1 cell line lysates (35ug/lane). This  
demonstrates the ZRSR2 antibody detected the  
ZRSR2 protein (arrow).