

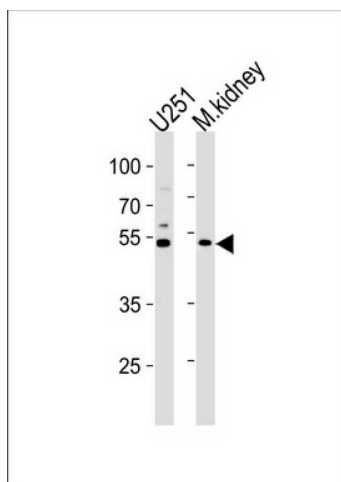
## Product datasheet for TA325148S

### C1GALT1 Rabbit Polyclonal Antibody

#### Product data:

Product Type:	Primary Antibodies
Applications:	WB
Recommended Dilution:	WB: 1:1000
Reactivity:	Human, Mouse
Host:	Rabbit
Isotype:	IgG
Clonality:	Polyclonal
Immunogen:	This C1GALT1 antibody is generated from rabbits immunized with a KLH conjugated synthetic peptide between 115-144 amino acids from the Central region of human C1GALT1.
Formulation:	Purified polyclonal antibody supplied in PBS with 0.09% (W/V) sodium azide.
Concentration:	lot specific
Purification:	This antibody is purified through a protein A column, followed by peptide affinity purification.
Conjugation:	Unconjugated
Storage:	Store at -20°C as received.
Stability:	Stable for 12 months from date of receipt.
Predicted Protein Size:	42203 Da
Gene Name:	core 1 synthase, glycoprotein-N-acetylgalactosamine 3-beta-galactosyltransferase 1
Database Link:	<a href="#">NP_064541</a> <a href="#">Entrez Gene 94192 Mouse</a> <a href="#">Entrez Gene 56913 Human</a> <a href="#">Q9NS00</a>
Synonyms:	C1GALT; T-synthase
Protein Families:	Transmembrane
Protein Pathways:	Metabolic pathways, O-Glycan biosynthesis


[View online »](#)

**Product images:**

C1GALT1 Antibody (Center) (Cat. #TA325148])  
western blot analysis in U251 cell line and mouse  
kidney lysates (35ug/lane). This demonstrates the  
C1GALT1 antibody detected the C1GALT1 protein  
(arrow).