

Product datasheet for **TA325148**

C1GALT1 Rabbit Polyclonal Antibody

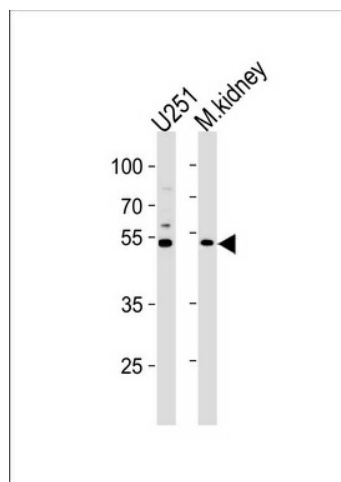
Product data:

Product Type:	Primary Antibodies
Applications:	WB
Recommended Dilution:	WB: 1:1000
Reactivity:	Human, Mouse
Host:	Rabbit
Isotype:	IgG
Clonality:	Polyclonal
Immunogen:	This C1GALT1 antibody is generated from rabbits immunized with a KLH conjugated synthetic peptide between 115-144 amino acids from the Central region of human C1GALT1.
Formulation:	Purified polyclonal antibody supplied in PBS with 0.09% (W/V) sodium azide.
Concentration:	lot specific
Purification:	This antibody is purified through a protein A column, followed by peptide affinity purification.
Conjugation:	Unconjugated
Storage:	Store at -20°C as received.
Stability:	Stable for 12 months from date of receipt.
Predicted Protein Size:	42203 Da
Gene Name:	core 1 synthase, glycoprotein-N-acetylgalactosamine 3-beta-galactosyltransferase 1
Database Link:	NP_064541 Entrez Gene 94192 Mouse Entrez Gene 56913 Human Q9NS00
Synonyms:	C1GALT; T-synthase
Protein Families:	Transmembrane
Protein Pathways:	Metabolic pathways, O-Glycan biosynthesis



[View online »](#)

Product images:



C1GALT1 Antibody (Center) (Cat. #TA325148) western blot analysis in U251 cell line and mouse kidney lysates (35ug/lane). This demonstrates the C1GALT1 antibody detected the C1GALT1 protein (arrow).