

Product datasheet for **TA325147S**

LILRA3 Rabbit Polyclonal Antibody

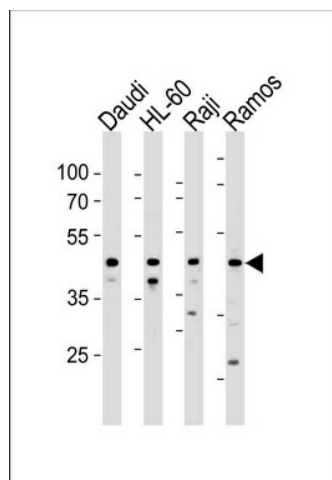
Product data:

Product Type:	Primary Antibodies
Applications:	WB
Recommended Dilution:	WB: 1:1000
Reactivity:	Human
Host:	Rabbit
Isotype:	IgG
Clonality:	Polyclonal
Immunogen:	This LILRA3 antibody is generated from rabbits immunized with a KLH conjugated synthetic peptide between 350-378 amino acids from the C-terminal region of human LILRA3.
Formulation:	Purified polyclonal antibody supplied in PBS with 0.09% (W/V) sodium azide.
Concentration:	lot specific
Purification:	This antibody is purified through a protein A column, followed by peptide affinity purification.
Conjugation:	Unconjugated
Storage:	Store at -20°C as received.
Stability:	Stable for 12 months from date of receipt.
Predicted Protein Size:	47472 Da
Gene Name:	leukocyte immunoglobulin like receptor A3
Database Link:	NP_001166125 Entrez Gene 11026 Human Q8N6C8
Synonyms:	CD85E; HM31; HM43; ILT-6; ILT6; LIR-4; LIR4
Protein Families:	Secreted Protein



[View online »](#)

Product images:



LILRA3 Antibody (C-term) (Cat. #[TA325147])
western blot analysis in Daudi, HL-60, Raji and
Ramos