

## Product datasheet for **TA325146S**

### **PITPN (PITPNA) Rabbit Polyclonal Antibody**

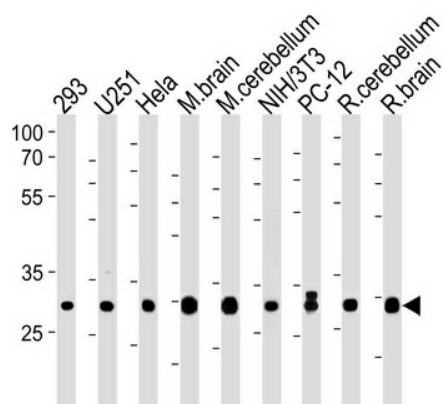
#### **Product data:**

<b>Product Type:</b>	Primary Antibodies
<b>Applications:</b>	WB
<b>Recommended Dilution:</b>	WB: 1:1000
<b>Reactivity:</b>	Human, Mouse, Rat (Predicted: Bovine, Rabbit)
<b>Host:</b>	Rabbit
<b>Isotype:</b>	IgG
<b>Clonality:</b>	Polyclonal
<b>Immunogen:</b>	This PITPNA antibody is generated from rabbits immunized with a KLH conjugated synthetic peptide between 243-270 amino acids from the C-terminal region of human PITPNA.
<b>Formulation:</b>	Purified polyclonal antibody supplied in PBS with 0.09% (W/V) sodium azide.
<b>Concentration:</b>	lot specific
<b>Purification:</b>	This antibody is purified through a protein A column, followed by peptide affinity purification.
<b>Conjugation:</b>	Unconjugated
<b>Storage:</b>	Store at -20°C as received.
<b>Stability:</b>	Stable for 12 months from date of receipt.
<b>Predicted Protein Size:</b>	31806 Da
<b>Gene Name:</b>	phosphatidylinositol transfer protein alpha
<b>Database Link:</b>	<a href="#">NP_006215</a> <a href="#">Entrez Gene 18738 Mouse</a> <a href="#">Entrez Gene 29525 Rat</a> <a href="#">Entrez Gene 5306 Human</a> <a href="#">Q00169</a>
<b>Synonyms:</b>	HEL-S-36; PI-TPalpha; PITPN; VIB1A



[View online »](#)

## Product images:



PITPNA Antibody (C-term) (Cat. #[TA325146]) western blot analysis in 293, U251, Hela, mouse NIH/3T3 and rat PC12 cell line and mouse brain cerebellum, rat cerebellum and brain lysates (35ug/lane). This demonstrates the PITPNA antibody detected the PITPNA protein (arrow).