

Product datasheet for **TA325145S**

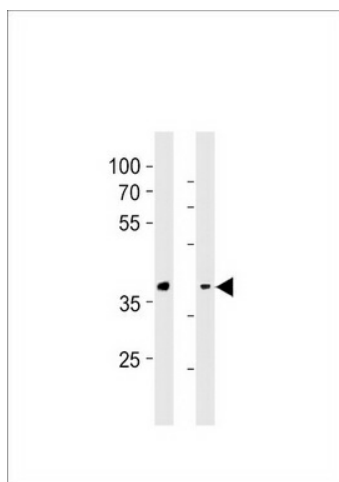
GPR4 Rabbit Polyclonal Antibody

Product data:

Product Type:	Primary Antibodies
Applications:	WB
Recommended Dilution:	WB: 1:1000
Reactivity:	Human, Rat (Predicted: Pig)
Host:	Rabbit
Isotype:	IgG
Clonality:	Polyclonal
Immunogen:	This GPR4 antibody is generated from rabbits immunized with a KLH conjugated synthetic peptide between 196-224 amino acids from the Central region of human GPR4.
Formulation:	Purified polyclonal antibody supplied in PBS with 0.09% (W/V) sodium azide.
Concentration:	lot specific
Purification:	This antibody is purified through a protein A column, followed by peptide affinity purification.
Conjugation:	Unconjugated
Storage:	Store at -20°C as received.
Stability:	Stable for 12 months from date of receipt.
Predicted Protein Size:	40982 Da
Gene Name:	G protein-coupled receptor 4
Database Link:	NP_005273 Entrez Gene 308408 Rat Entrez Gene 2828 Human P46093
Synonyms:	G protein-coupled receptor 4
Protein Families:	Druggable Genome, GPCR, Transmembrane



[View online »](#)

Product images:

GPR4 Antibody (Center) (Cat. #[TA325145])
western blot analysis in WiDr cell line and rat liver
tissue lysates (35ug/lane). This demonstrates the
GPR4 antibody detected the GPR4 protein
(arrow).