

## Product datasheet for **TA325144**

### **DNAAF8 Rabbit Polyclonal Antibody**

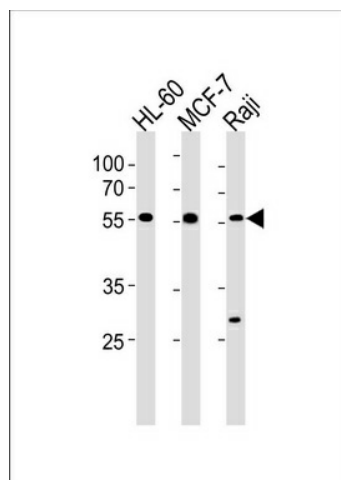
#### **Product data:**

<b>Product Type:</b>	Primary Antibodies
<b>Applications:</b>	WB
<b>Recommended Dilution:</b>	WB: 1:1000
<b>Reactivity:</b>	Human
<b>Host:</b>	Rabbit
<b>Isotype:</b>	IgG
<b>Clonality:</b>	Polyclonal
<b>Immunogen:</b>	This C16orf71 antibody is generated from rabbits immunized with a KLH conjugated synthetic peptide between 320-348 amino acids from the Central region of human C16orf71.
<b>Formulation:</b>	Purified polyclonal antibody supplied in PBS with 0.09% (W/V) sodium azide.
<b>Concentration:</b>	lot specific
<b>Purification:</b>	This antibody is purified through a protein A column, followed by peptide affinity purification.
<b>Conjugation:</b>	Unconjugated
<b>Storage:</b>	Store at -20°C as received.
<b>Stability:</b>	Stable for 12 months from date of receipt.
<b>Predicted Protein Size:</b>	55682 Da
<b>Gene Name:</b>	chromosome 16 open reading frame 71
<b>Database Link:</b>	<a href="#">NP_631909</a> <a href="#">Entrez Gene 146562 Human</a> <a href="#">Q8IYS4</a>
<b>Synonyms:</b>	DKFZp686H2240; FLJ43261



[View online »](#)

## Product images:



C16orf71 Antibody (Center) (Cat. #TA325144) western blot analysis in HL-60, MCF-7 and Raji cell line lysates (35ug/lane). This demonstrates the C16orf71 antibody detected the C16orf71 protein (arrow).