

## Product datasheet for **TA325143**

### MORC3 Rabbit Polyclonal Antibody

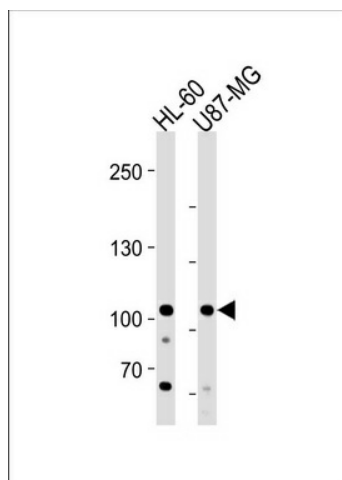
#### Product data:

Product Type:	Primary Antibodies
Applications:	WB
Recommended Dilution:	WB: 1:1000
Reactivity:	Human
Host:	Rabbit
Isotype:	IgG
Clonality:	Polyclonal
Immunogen:	This MORC3 antibody is generated from rabbits immunized with a KLH conjugated synthetic peptide between 634-663 amino acids from the Central region of human MORC3.
Formulation:	Purified polyclonal antibody supplied in PBS with 0.09% (W/V) sodium azide.
Concentration:	lot specific
Purification:	This antibody is purified through a protein A column, followed by peptide affinity purification.
Conjugation:	Unconjugated
Storage:	Store at -20°C as received.
Stability:	Stable for 12 months from date of receipt.
Predicted Protein Size:	107113 Da
Gene Name:	MORC family CW-type zinc finger 3
Database Link:	<a href="#">NP_056173</a> <a href="#">Entrez Gene 23515 Human</a> <a href="#">Q14149</a>
Synonyms:	NXP2; ZCW5; ZCWCC3



[View online »](#)

## Product images:



MORC3 Antibody (Center) (Cat. #TA325143) western blot analysis in HL-60 and U87-MG cell line lysates (35ug/lane). This demonstrates the MORC3 antibody detected the MORC3 protein (arrow).