

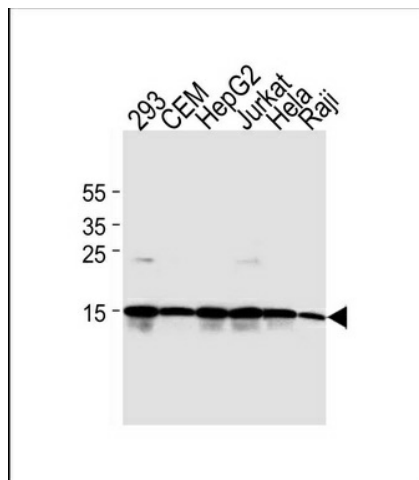
## Product datasheet for TA325142S

### Histone H2A.X (H2AFX) Mouse Monoclonal Antibody [Clone ID: 938CT5.1.1]

#### Product data:

Product Type:	Primary Antibodies
Clone Name:	938CT5.1.1
Applications:	WB
Recommended Dilution:	WB: 1:1000
Reactivity:	Human
Host:	Mouse
Isotype:	IgG1
Clonality:	Monoclonal
Immunogen:	This H2AFX antibody is generated from mice immunized with a KLH conjugated synthetic peptide between 115-143 amino acids from the C-terminal region of human H2AFX.
Formulation:	Purified monoclonal antibody supplied in PBS with 0.09% (W/V) sodium azide.
Concentration:	lot specific
Purification:	This antibody is purified through a protein G column, followed by dialysis against PBS.
Conjugation:	Unconjugated
Storage:	Store at -20°C as received.
Stability:	Stable for 12 months from date of receipt.
Predicted Protein Size:	15145 Da
Gene Name:	H2A histone family member X
Database Link:	<a href="#">NP_002096</a> <a href="#">Entrez Gene 3014 Human</a> <a href="#">P16104</a>
Synonyms:	H2A; H2A.X; H2AX; X
Protein Families:	Druggable Genome
Protein Pathways:	Systemic lupus erythematosus

[View online »](#)

**Product images:**


Western blot analysis of lysates from 293, CEM, HepG2, Jurkat, Hela, Raji cell line (from left to right). using H2AFX Antibody (C-term) (Cat. # [TA325142]). [TA325142] was diluted at 1:2000 at each lane. A goat anti-mouse IgG H&L (HRP) at 1:3000 dilution was used as the secondary antibody. Lysates at 35ug per lane.