

Product datasheet for **TA325141S**

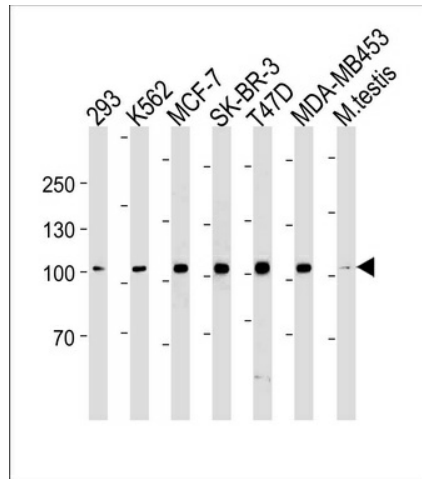
ACE2 Mouse Monoclonal Antibody [Clone ID: 881CT16.4.4] (Angiotensin Converting Enzyme 2)

Product data:

Product Type:	Primary Antibodies
Clone Name:	881CT16.4.4
Applications:	WB
Recommended Dilution:	WB: 1:1000
Reactivity:	Human
Host:	Mouse
Isotype:	IgM, kappa
Clonality:	Monoclonal
Immunogen:	Purified His-tagged ACE2 protein was used to produced this monoclonal antibody.
Formulation:	Purified monoclonal antibody supplied in PBS with 0.09% (W/V) sodium azide.
Concentration:	lot specific
Purification:	This antibody is prepared by Euglobin precipitation followed by dialysis against PBS.
Conjugation:	Unconjugated
Storage:	Store at -20°C as received.
Stability:	Stable for 12 months from date of receipt.
Predicted Protein Size:	92463 Da
Gene Name:	angiotensin I converting enzyme 2
Database Link:	NP_068576 Entrez Gene 59272 Human Q9BYF1
Synonyms:	ACEH
Protein Families:	Druggable Genome, Secreted Protein, Transmembrane
Protein Pathways:	Renin-angiotensin system

[View online »](#)

Product images:



ACE2 (SARS Receptor) Antibody (Center) (Cat. # [TA325141]) western blot analysis in 293, K562, MCF-7, SK-BR-3, T47D, MDA-MB-453 cell line and mouse testis tissue lysates (35ug/lane). This demonstrates the ACE2 antibody detected the ACE2 protein (arrow).