

Product datasheet for **TA325140**

E Cadherin (CDH1) Mouse Monoclonal Antibody [Clone ID: 813CT11.1.3]

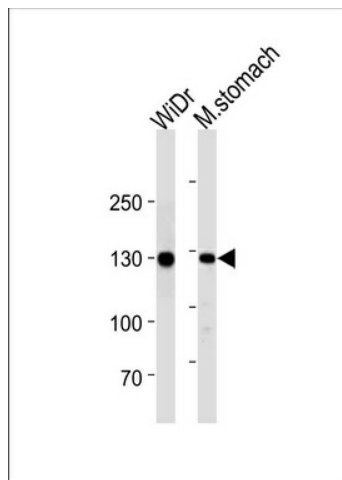
Product data:

Product Type:	Primary Antibodies
Clone Name:	813CT11.1.3
Applications:	WB
Recommended Dilution:	WB: 1:1000
Reactivity:	Human, Mouse
Host:	Mouse
Isotype:	IgG1, kappa
Clonality:	Monoclonal
Immunogen:	Purified His-tagged CDH1 protein was used to produced this monoclonal antibody.
Formulation:	Purified monoclonal antibody supplied in PBS with 0.09% (W/V) sodium azide.
Concentration:	lot specific
Purification:	This antibody is purified through a protein G column, followed by dialysis against PBS.
Conjugation:	Unconjugated
Storage:	Store at -20°C as received.
Stability:	Stable for 12 months from date of receipt.
Predicted Protein Size:	97456 Da
Gene Name:	cadherin 1
Database Link:	NP_004351 Entrez Gene 12550 Mouse Entrez Gene 999 Human P12830
Synonyms:	Arc-1; CD324; CDHE; ECAD; LCAM; UVO
Protein Families:	Druggable Genome, ES Cell Differentiation/IPS, Transmembrane
Protein Pathways:	Adherens junction, Bladder cancer, Cell adhesion molecules (CAMs), Endometrial cancer, Melanoma, Pathogenic Escherichia coli infection, Pathways in cancer, Thyroid cancer



[View online »](#)

Product images:



CDH1 Antibody (Cat. #TA325140) western blot analysis in WiDr cell line and mouse stomach tissue lysates (35ug/lane). This demonstrates the CDH1 antibody detected the CDH1 protein (arrow).