

## Product datasheet for **TA325138S**

### **Creatine kinase B type (CKB) Mouse Monoclonal Antibody [Clone ID: 893CT29.1.1]**

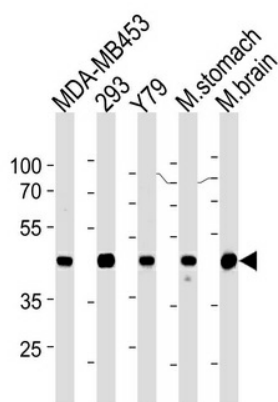
#### **Product data:**

Product Type:	Primary Antibodies
Clone Name:	893CT29.1.1
Applications:	WB
Recommended Dilution:	WB: 1:1000
Reactivity:	Human, Mouse
Host:	Mouse
Isotype:	IgG1
Clonality:	Monoclonal
Immunogen:	Purified His-tagged CKB protein was used to produced this monoclonal antibody.
Formulation:	Purified monoclonal antibody supplied in PBS with 0.09% (W/V) sodium azide.
Concentration:	lot specific
Purification:	This antibody is purified through a protein G column, followed by dialysis against PBS.
Conjugation:	Unconjugated
Storage:	Store at -20°C as received.
Stability:	Stable for 12 months from date of receipt.
Predicted Protein Size:	42644 Da
Gene Name:	creatine kinase B
Database Link:	<a href="#">NP_001814</a> <a href="#">Entrez Gene 12709 Mouse</a> <a href="#">Entrez Gene 1152 Human</a> <a href="#">P12277</a>
Synonyms:	B-CK; BCK; CKBB; HEL-211; HEL-S-29
Protein Families:	Druggable Genome
Protein Pathways:	Arginine and proline metabolism, Metabolic pathways



[View online »](#)

## Product images:



Creatine Kinase BB (CKB) Antibody (Center) (Cat. #TA325138]) western blot analysis in MDA-MB453, 293, Y79 cell line, mouse stomach and brain tissue lysates (35ug/lane). This demonstrates the CKB antibody detected the CKB protein (arrow).