

Product datasheet for **TA325138**

Creatine kinase B type (CKB) Mouse Monoclonal Antibody [Clone ID: 893CT29.1.1]

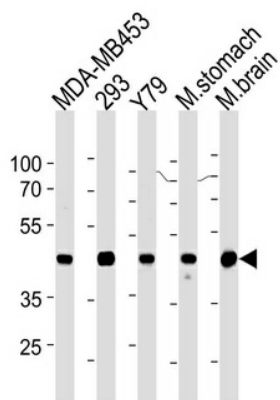
Product data:

| | |
|-------------------------|---|
| Product Type: | Primary Antibodies |
| Clone Name: | 893CT29.1.1 |
| Applications: | WB |
| Recommended Dilution: | WB: 1:1000 |
| Reactivity: | Human, Mouse |
| Host: | Mouse |
| Isotype: | IgG1 |
| Clonality: | Monoclonal |
| Immunogen: | Purified His-tagged CKB protein was used to produced this monoclonal antibody. |
| Formulation: | Purified monoclonal antibody supplied in PBS with 0.09% (W/V) sodium azide. |
| Concentration: | lot specific |
| Purification: | This antibody is purified through a protein G column, followed by dialysis against PBS. |
| Conjugation: | Unconjugated |
| Storage: | Store at -20°C as received. |
| Stability: | Stable for 12 months from date of receipt. |
| Predicted Protein Size: | 42644 Da |
| Gene Name: | creatine kinase B |
| Database Link: | NP_001814 Entrez Gene 12709 Mouse Entrez Gene 1152 Human P12277 |
| Synonyms: | B-CK; BCK; CKBB; HEL-211; HEL-S-29 |
| Protein Families: | Druggable Genome |
| Protein Pathways: | Arginine and proline metabolism, Metabolic pathways |



[View online »](#)

Product images:



Creatine Kinase BB (CKB) Antibody (Center) (Cat. #TA325138) western blot analysis in MDA-MB453, 293, Y79 cell line, mouse stomach and brain tissue lysates (35ug/lane). This demonstrates the CKB antibody detected the CKB protein (arrow).