

## Product datasheet for **TA325137**

### Ccnb1 Rabbit Polyclonal Antibody

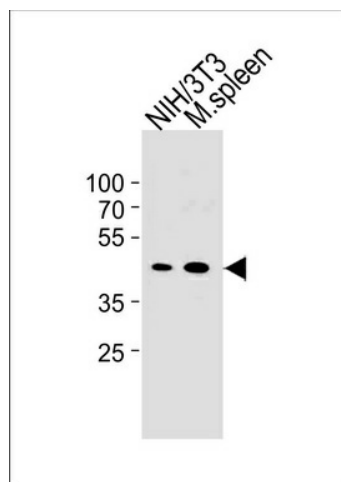
#### Product data:

Product Type:	Primary Antibodies
Applications:	WB
Recommended Dilution:	WB: 1:1000
Reactivity:	Mouse (Predicted: Hamster)
Host:	Rabbit
Isotype:	IgG
Clonality:	Polyclonal
Immunogen:	This Mouse CCNB1 antibody is generated from rabbits immunized with a KLH conjugated synthetic peptide between 103-130 amino acids from the Central region of mouse CCNB1.
Formulation:	Purified polyclonal antibody supplied in PBS with 0.09% (W/V) sodium azide.
Concentration:	lot specific
Purification:	This antibody is purified through a protein A column, followed by peptide affinity purification.
Conjugation:	Unconjugated
Storage:	Store at -20°C as received.
Stability:	Stable for 12 months from date of receipt.
Predicted Protein Size:	48052 Da
Gene Name:	cyclin B1
Database Link:	<a href="#">NP_758505</a> <a href="#">Entrez Gene 268697 Mouse</a> <a href="#">P24860</a>
Synonyms:	CCNB



[View online »](#)

## Product images:



Mouse CCNB1 Antibody (Center S123/S125) (Cat. #TA325137) western blot analysis in mouse NIH/3T3 cell line and mouse spleen tissue lysates (35ug/lane). This demonstrates the mouse CCNB1 antibody detected the mouse CCNB1 protein (arrow).