

## Product datasheet for **TA325136**

### ICT1 (MRPL58) Rabbit Polyclonal Antibody

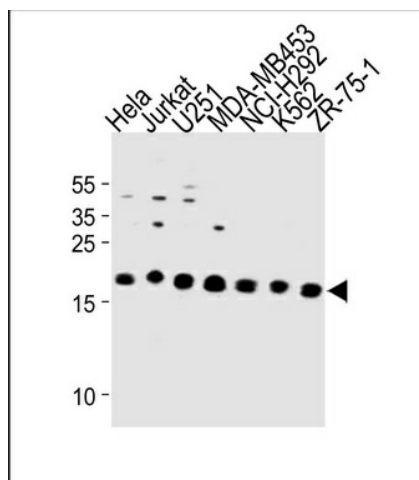
#### Product data:

Product Type:	Primary Antibodies
Applications:	WB
Recommended Dilution:	WB: 1:1000
Reactivity:	Human
Host:	Rabbit
Isotype:	IgG
Clonality:	Polyclonal
Immunogen:	This ICT1 antibody is generated from rabbits immunized with a KLH conjugated synthetic peptide between 153-179 amino acids from the C-terminal region of human ICT1.
Formulation:	Purified polyclonal antibody supplied in PBS with 0.09% (W/V) sodium azide.
Concentration:	lot specific
Purification:	This antibody is purified through a protein A column, followed by peptide affinity purification.
Conjugation:	Unconjugated
Storage:	Store at -20°C as received.
Stability:	Stable for 12 months from date of receipt.
Predicted Protein Size:	23630 Da
Gene Name:	immature colon carcinoma transcript 1
Database Link:	<a href="#">NP_001536</a> <a href="#">Entrez Gene 3396 Human</a> <a href="#">Q14197</a>
Synonyms:	DS-1; DS1; ICT1; MRP-L58



[View online »](#)

## Product images:



ICT1 Antibody (C-term) (Cat. #TA325136) western blot analysis in HeLa, Jurkat, U251, MDA-MB453, NCI-H292, K562, ZR-75-1 cell line lysates (35ug/lane). This demonstrates the ICT1 antibody detected the ICT1 protein (arrow).