

Product datasheet for **TA325135S**

MECR Rabbit Polyclonal Antibody

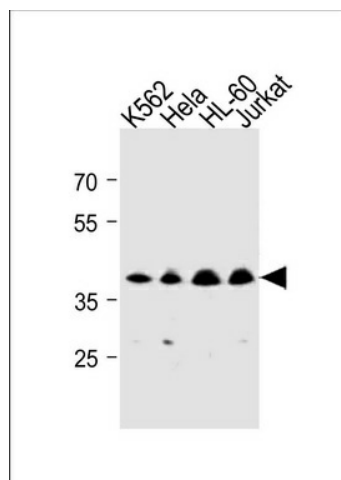
Product data:

Product Type:	Primary Antibodies
Applications:	WB
Recommended Dilution:	WB: 1:1000
Reactivity:	Human
Host:	Rabbit
Isotype:	IgG
Clonality:	Polyclonal
Immunogen:	This MECR antibody is generated from rabbits immunized with a KLH conjugated synthetic peptide between 201-229 amino acids from the Central region of human MECR.
Formulation:	Purified polyclonal antibody supplied in PBS with 0.09% (W/V) sodium azide.
Concentration:	lot specific
Purification:	This antibody is purified through a protein A column, followed by peptide affinity purification.
Conjugation:	Unconjugated
Storage:	Store at -20°C as received.
Stability:	Stable for 12 months from date of receipt.
Predicted Protein Size:	40462 Da
Gene Name:	mitochondrial trans-2-enoyl-CoA reductase
Database Link:	NP_057095 Entrez Gene 51102 Human Q9BV79
Synonyms:	CGI-63; FASN2B; NRBF1
Protein Families:	Druggable Genome
Protein Pathways:	Fatty acid elongation in mitochondria, Metabolic pathways



[View online »](#)

Product images:



MECR Antibody (Center) (Cat. #[TA325135])
western blot analysis in K562, HeLa, HL-60, Jurkat
cell line lysates (35ug/lane). This demonstrates the
MECR antibody detected the MECR protein
(arrow).