

Product datasheet for **TA325134**

PARP3 Rabbit Polyclonal Antibody

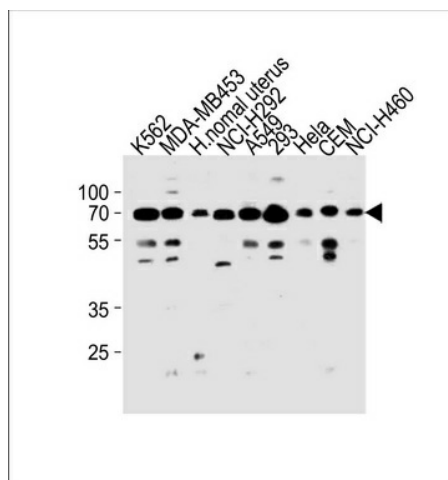
Product data:

Product Type:	Primary Antibodies
Applications:	WB
Recommended Dilution:	WB: 1:1000
Reactivity:	Human
Host:	Rabbit
Isotype:	IgG
Clonality:	Polyclonal
Immunogen:	This PARP3 antibody is generated from rabbits immunized with a KLH conjugated synthetic peptide between 99-126 amino acids from the N-terminal region of human PARP3.
Formulation:	Purified polyclonal antibody supplied in PBS with 0.09% (W/V) sodium azide.
Concentration:	lot specific
Purification:	This antibody is purified through a protein A column, followed by peptide affinity purification.
Conjugation:	Unconjugated
Storage:	Store at -20°C as received.
Stability:	Stable for 12 months from date of receipt.
Predicted Protein Size:	60070 Da
Gene Name:	poly(ADP-ribose) polymerase family member 3
Database Link:	NP_005476 Entrez Gene 10039 Human Q9Y6F1
Synonyms:	ADPRT3; ADPRTL2; ADPRTL3; ARTD3; IRT1; PADPRT-3
Protein Families:	Druggable Genome
Protein Pathways:	Base excision repair



[View online »](#)

Product images:



PARP3 Antibody (N-term) (Cat. #TA325134) western blot analysis in K562, MDA-MB453, NCI-H292, A549, 293, HeLa, CEM, NCI-H460 cell line and human normal uterus tissue lysates (35ug/lane). This demonstrates the PARP3 antibody detected the PARP3 protein (arrow).